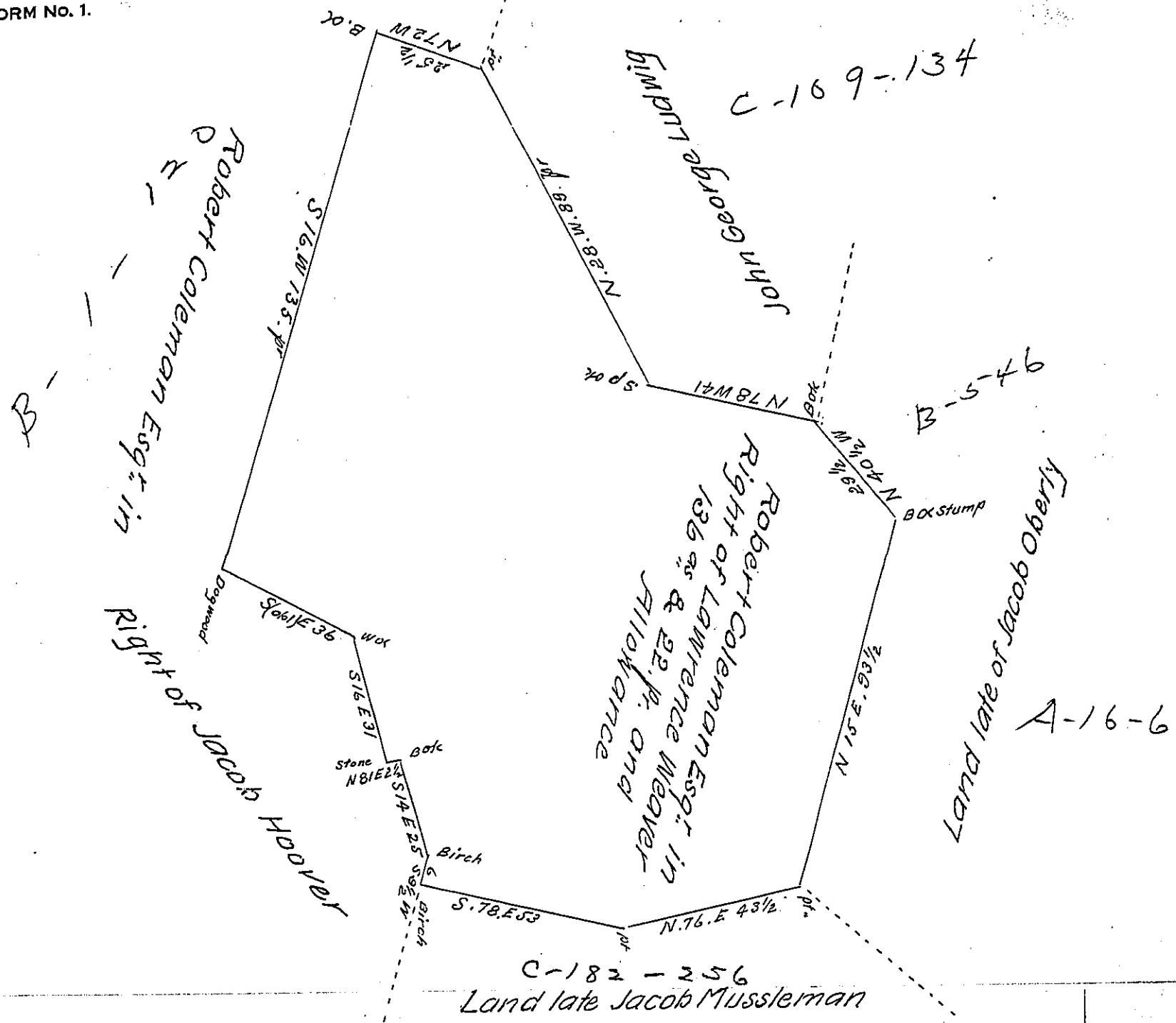


FORM NO. 1.



A Draught of a peice or Tract of Land Situate in Warwick Township Lancaster County Containing 136 <sup>9</sup>/<sub>16</sub> & .22 p. and the Usual Allowance of Six <sup>1</sup>/<sub>100</sub> cent for Roads &c. Surveyed (Agreeably to the old Lines and Corners &c.) the first Day of August A.D. 1801 for Robert Coleman Esq. in Right of Lawrence Weaver, By Virtue of a Warrant Dated the 8<sup>th</sup> Day of June A.D. 1750 - To Samuel Cochran Esq.

Surveyor General -

per H. Ream D.S.  
& Saml. Ensminger D.S.

IN TESTIMONY that the above is a copy of the original remaining on file in the Department of Internal Affairs of Pennsylvania, made comformably to an Act of Assembly approved the 16th day of February 1833, I have hereunto set my hand and caused the Seal of said Department to be affixed at Harrisburg, this ninth day of October 1907.

*Henry Howard*  
Secretary of Internal Affairs.